

Ironbridge

2011/12

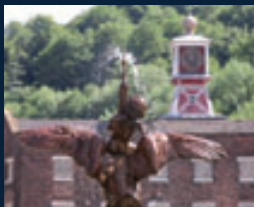
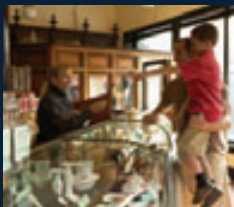
Ten Amazing Museums



The **IRONBRIDGE GORGE MUSEUMS**

01952 433424

www.ironbridge.org.uk



Visiting Information

Call 01952 433424 or visit www.ironbridge.org.uk



OPENING HOURS

Mon-Sun, 10am to 5pm. Some museums close or reduce hours Nov to Mar inclusive. Call 01952 433424 for winter opening. Broseley Pipeworks is open 1pm-5pm, 23 May - 25 Sept inclusive. All museums close 24th & 25th Dec and New Year's Day. The Tollhouse is open every weekend during the local school summer holidays or by prior arrangement for schools and groups. Call for details.

The Visitor Information Centre in the Museum of The Gorge is open 9am weekdays, 10am weekends.

PUBLIC TRANSPORT

For rail info call 08457 484950. For local bus information call 01952 200005.

Gorge Connect shuttle connects most sites weekends & Bank Holiday Mondays Easter to October inclusive and is free to Museum Passport holders. Cycle hire is available at Jackfield Tile Museum.

CAR PARK CHARGES

Park in all of the museum car parks for just a single small charge. Ticket does not include Museum of The Gorge and Ironbridge pay and display car parks where local authority charges apply.

TICKET PRICES

A Passport Ticket allows repeat daytime admission for 12 months to all ten museums.

Adult £22.50
60 Plus £18.25
Child/Student £14.75
Family £61.50 (2 adults + 3 children)

Prices valid from 1 April 2011 until 23 March 2012. Additional costs apply for some events and activities. Call for terms and conditions. Passports not valid for entry at evening events or at Blists Hill Christmas weekends. Single site tickets are also available at all museums.



twitter

Activities and demonstrations vary day to day, we advise you to call to check details before you travel on 01952 433424. Information correct at time of print but subject to change without notice.



Ride on the Incline Lift

Exchange your money in the Bank, admire the goods in the Grocers, Bakery and Sweetshop. Find out about curious remedies in the Chemist, and see the Printer and Candle Maker in action. Just a taste of what's on offer here at Blists Hill.



See how Victorians lived and worked



All the fun of the fair!



Experience the giant film show in the landmark Visitor Centre

Blists Hill Victorian Town

A brilliant recreation of Victorian life...

What was it really like to live in Victorian England?

Travel back
over 100 years
to experience
the sights,
sounds, smells
and tastes of
a recreated
Victorian
town.

Enter a different world filled with Victorian characters in costume going about their daily life. Fascinating for visitors of all ages, the 52 acre site is a bustling recreation of a Victorian town, and uses token pounds, shillings and pence for its transactions. Discover what life was like for a Victorian housewife in the cottages, and in the main season have fun at the fairground and enjoy a journey on a horse and cart. Reminders of the past dot the landscape with original industrial monuments such as the Hay Inclined Plane and Blast Furnaces.

Discover the role of the Post Office in the Community, in the British Postal Museum & Archive exhibition above the Old Post Office.

Blists Hill, like all the Ironbridge Museums, offers a vast range of educational resources and activities to schools and provides special itineraries and rates for groups. Call 01952 435900 for details.

Home to the
BBC's Victorian Pharmacy



Enginuity

Test your reactions against the speed of a robot; generate power from water; or pull a locomotive by hand.

Switch on your imagination in the National Design & Technology Education Centre and discover how good ideas can generate great products.

Find out how a little ingenuity will empower you to pull a 10 ton locomotive or generate electricity from flowing water. Look at familiar objects with new eyes using the giant X-ray machine, build an earthquake-proof tower and challenge our robotic arm. Whether you're young or old, this is your chance to discover the true spirit of Ironbridge: it lies within us all!

Ingenious inventions and the power of technology...

For more information call
01952 433424
or visit www.ironbridge.org.uk



Challenge yourself with lots of extra activities during the school holidays



Hands-on learning



See the world differently using our giant X-ray machine

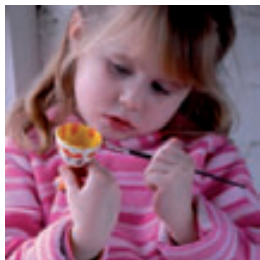
It's a hands-on, get stuck-in, have-a-go sort of place, with an incredible collection of interactive machinery.



Great for children of all ages to learn and have fun



Discover the secrets of ceramic production with demonstrations and workshops for all ages



Hands-on activities all year round



Witness tiles still being manufactured today



See exquisite examples in the Galleries



Get involved in workshops held during school holidays

Coalport China Museum

Home to the famous Coalport China Factory until 1926, here you'll find the listed buildings are now filled with the finest examples of the old factory's work. Alongside the National Collections of Coalport and Caughley China, discover displays and demonstrations explaining the history and techniques of china making. On many days during school holidays, come and have a go yourself and decorate china with your own designs or even try clay modelling.



Jackfield Tile Museum

The village of Jackfield was once at the centre of the world tile industry. Today one of the old factories is filled with room after room of beautiful tile displays and settings such as a pub, a butcher's shop and a tube station. As you wander through the museum you will be able to see, touch and even walk on magnificent British tiles.

On many days, you can watch staff from the Craven Dunnill Company manufacture tiles or even create your own at one of the regularly held workshops.

At the adjacent **Fusion** see contemporary Designers and Makers in action, marking a new and exciting period in the history of Jackfield.

Tiles that once graced an Empire...



Why not hire a bike here and explore the area and all our museums the 'green way'? Take time to journey through the Gorge and explore the footprints of the past.

Coalbrookdale

Museum of Iron and The Old Furnace



Marvel at the art of industry



The Old Furnace - where it all began



Explore the elegant former homes of the Darby family

The mighty Coalbrookdale Museum of Iron celebrates the importance of the early iron industry and also houses a fabulous collection of fine art castings, including statues, benches, tables, plaques, fire surrounds and other works of art. Nearby is Abraham Darby's original Old Furnace, the heart of the Gorge, and the place where it all began 300 years ago.

Step inside the **Darby Houses** and discover rooms packed with original furniture, costumes and mementos from the everyday life of the Ironmasters.



For more information, call
01952 433424
or visit www.ironbridge.org.uk



Absorb the sheer beauty of the Gorge and its historic Iron Bridge

The Iron Bridge and Tollhouse

Our forebears may have invented heavy industry, but in stark contrast to many of today's industrial projects, they never forgot the majesty of elegance or the importance of sheer beauty. Nowhere is this more artfully expressed than in the graceful lines and soaring arches of the world's first cast iron bridge.

As the enduring symbol of our Industrial Revolution, it will stay in your memory forever.

To the side of the Iron Bridge you'll find the original Tollhouse, home to an exhibition revealing the secrets behind the Bridge. The Tollhouse is open during the summer, please check for details.


Symbols of significance and beauty...

The Museum of The Gorge

Housed in a Gothic-style warehouse beside the River Severn. The Museum of The Gorge uses film to explain the area's significance and you can see what the Gorge was

like in 1796 with the help of a giant 12 metre long model. Spot a Royal carriage crossing the Iron Bridge, the cargo on a Severn Trow and a tiny figure toiling in a coal mine.

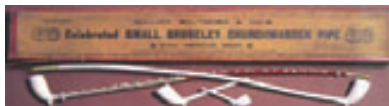
Understand more about the area's history and discover why, as a World Heritage Site, it ranks alongside the Pyramids and the Taj Mahal in its importance in world history.

 The Visitor Information Centre can be found here.



The Museum of The Gorge is a short walk alongside the river from the Iron Bridge

Broseley Pipeworks



This abandoned factory was once home to one of the most prolific clay tobacco pipe makers in Britain, exporting all over the world. Production came to an end in the 1950s but it remains as though the workforce left just minutes before you arrived. Seasonal opening times - please check for details.



The Tar Tunnel

Amongst the most curious of tourist attractions is the Tar Tunnel, where miners digging in 1787 struck a spring of natural bitumen, a black treacle-like substance. The eerie brick-lined tunnel was a great curiosity and bitumen still oozes from its walls today.



Do you dare to walk the Tar Tunnel - even with the hard hat supplied?

The eerie, oozing, tunnel is still a great curiosity...

For more information call 01952 433424
or visit www.ironbridge.org.uk

Events & Exhibitions Calendar 2011

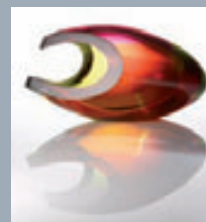
Below are listed a few of our many special events. Check out www.ironbridge.org.uk for a full list of events and workshops.

Date	Event title	Venue
05 Mar	Sci-tech Fair	Enginuity
21 Mar 2011 - Feb 2012	Our Sporting Life Sporting Heroes	Exhibition at the Coalbrookdale Gallery
04 Apr 2011 - Sep 2012	Our Sporting Life The Science of Sport	Exhibition at Enginuity
11 - 25 Apr	Science of Fairgrounds	Enginuity
22 - 25 Apr	Easter Celebrations	Blists Hill Victorian Town
28 - 30 May	Queen Victoria's Birthday	Blists Hill Victorian Town
28 May - 05 June	Wicked Water	Enginuity
1 July - 30 Sept	World Heritage Site 25th Anniversary	Exhibition at Jackfield Tile Museum
23 July	Science, Sport, Life Festival	Coalbrookdale
24 July	Community Games	Blists Hill Victorian Town
30 & 31 July	Treasure Island Weekend	Blists Hill Victorian Town
13 & 14 Aug	Sherlock Holmes Weekend	Blists Hill Victorian Town
27 - 29 Aug	Alice's Adventures in Wonderland	Blists Hill Victorian Town
24 Sept	World Heritage Site Festival	The Ironbridge Gorge
8 & 9 Oct	Gorgeous Craft Fair	Enginuity
22 - 30 Oct	Speed	Enginuity
29 Oct	Ghostly Gaslight	Blists Hill Victorian Town
05 Nov	Fireworks Night	Blists Hill Victorian Town
10 & 11 Dec	Christmas Weekend	Blists Hill Victorian Town
17 & 18 Dec	Christmas Weekend	Blists Hill Victorian Town

Large print and Access information available, call 01952 433424

'Made in The Gorge' & 'From Our Collections'

If you're looking for that special gift, a treat for yourself or a memento of a great day out, be sure to visit our museum shops. With beautiful handmade items, "Made in the Gorge" truly showcases local artists and designers. Our fabulous "From our Collections" offers a range of gifts inspired by the beautiful and historic objects found within our sites.



Gift Aid is a very simple initiative which allows charities like the Ironbridge Gorge Museum Trust to reclaim tax paid on donations. If you choose to Gift Aid your donation the taxman will then pay us 25p in the £ on that donation. This will cost you nothing except a few seconds of your time when you visit but is of huge importance to us and will make a real difference to our charitable work. **Thank You.**

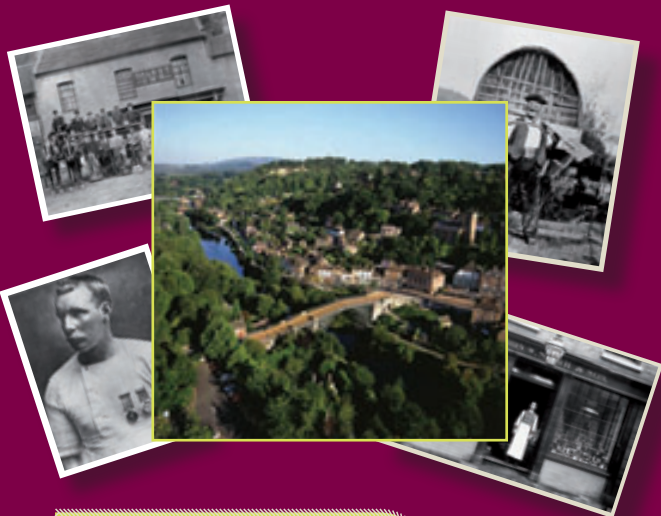
1986 - 2011 25TH ANNIVERSARY OF THE WORLD HERITAGE SITE

Celebrate the 25th Anniversary of the Ironbridge Gorge being designated as one of the UK's first World Heritage Sites with a series of special events and an exhibition at Jackfield Tile Museum.



25th Anniversary Exhibition 1st July - 30th September 2011

Fascinating photographs show the area now and then. You too can be part of the exhibition by sharing your own personal memories of the World Heritage Site with us.



To find out how you
can get involved call
01952 433424 or visit
www.ironbridge.org.uk



Science, Sport, Life



Peter Spurrier/Intersport Images

An exciting series of events and exhibitions forming part of the official London 2012 *Our Sporting Life* programme and the national *Stories of the World* project.

SPORTING HEROES

21 March 2011 - 29 Feb 2012
at The Coalbrookdale Gallery
Free Entry, Monday - Friday

Bringing the Museum's nationally designated archives together with modern material, this exhibition celebrates Shropshire's sporting heroes, from England footballer Billy Wright and Captain Matthew Webb, to modern heroes including boxing legend Richie Woodhall and England goalkeeper Joe Hart.



THE SCIENCE OF SPORT

4 April 2011 - 9 September 2012 at Enginuity

Explore how space-age materials help to create the record-breaking performances of the world's greatest athletes and get up close to Team GB's gold medal winning eight rowing boat from the Sydney 2000 Olympics.

SCIENCE, SPORT, LIFE FESTIVAL

23 July 2011 at Enginuity, Coalbrookdale

Find inspiration at this fun, family event on the Coalbrookdale Green, with opportunities to have a go at fencing, cricket, archery, yoga and pilates. Talks, fitness assessments and entertaining challenges will be available throughout the day in Enginuity.

COMMUNITY GAMES

24 July 2011 at Blists Hill Victorian Town

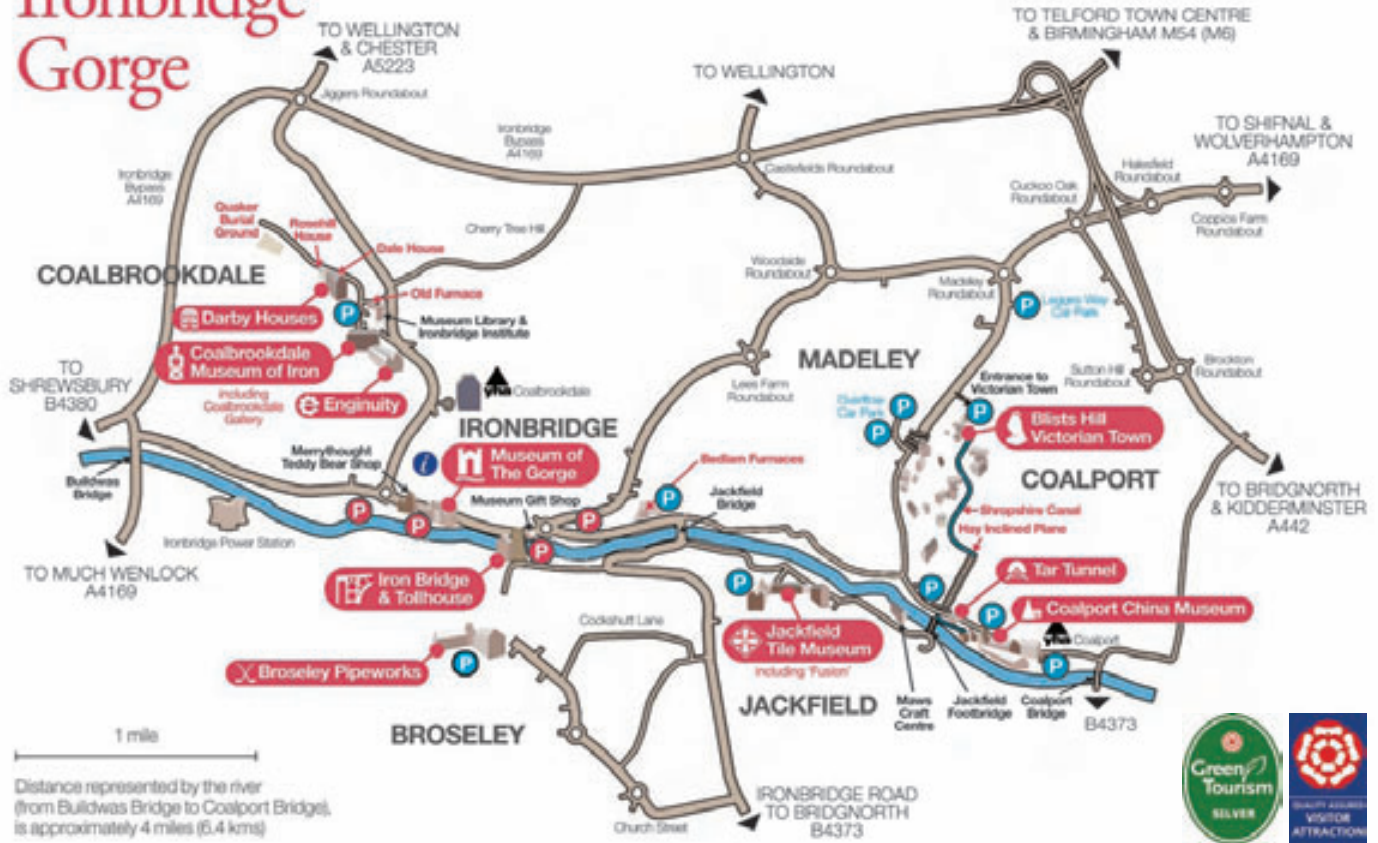
Watch competitors from our local communities compete in a series of quirky, historic challenges, from leek tossing and wheelbarrow races, to the hundred metre dash.

Please check our website www.ironbridge.org.uk or call **01952 433424** for more details.

Ironbridge Gorge

Local authority Pay & Display

Museum Pay & Display



HOW TO GET THERE

Take junction 4 from the M54 and follow brown signs for Ironbridge Gorge.



The ten museums are in an area of about six square miles and you will need transport to travel between them. There are three routes into the Ironbridge Gorge, take one of the following: **Blists Hill Museums** for Blists Hill Victorian Town, Coalport China Museum and Tar Tunnel. **Ironbridge Museums** for The Iron Bridge & Tollhouse, Museum of The Gorge, Jackfield Tile Museum and Broseley Pipeworks. **Coalbrookdale Museums** for Coalbrookdale Museum of Iron, Darby Houses and Enginuity.

MUSEUM SITE



SAT NAV VISIT TIME

Blists Hill Victorian Town	●	●	●	●	●	●	-	TF7 5DU	3 hours
Coalport China Museum	-	-	●	●	●	-	●	TF8 7HT	1.5 hours
Tar Tunnel	-	-	●	-	-	-	●	TF8 7HT	20 mins
Museum of Iron	●	●	●	●	●	●	●	TF8 7DQ	1.5 hours
Darby Houses	-	-	-	-	●	-	●	TF8 7DQ	1 hour
Enginuity	●	-	●	●	●	-	●	TF8 7DQ	2 hours
Iron Bridge & Tollhouse	-	-	-	-	-	-	●	TF8 7JP	30 mins
Museum of The Gorge	-	-	●	●	●	-	●	TF8 7NH	45 mins
Jackfield Tile Museum	●	-	●	●	●	-	●	TF8 7LJ	1.5 hours
Broseley Pipeworks	-	-	●	●	●	-	●	TF12 5LX	1 hour



THE BRITISH POSTAL MUSEUM & ARCHIVE

